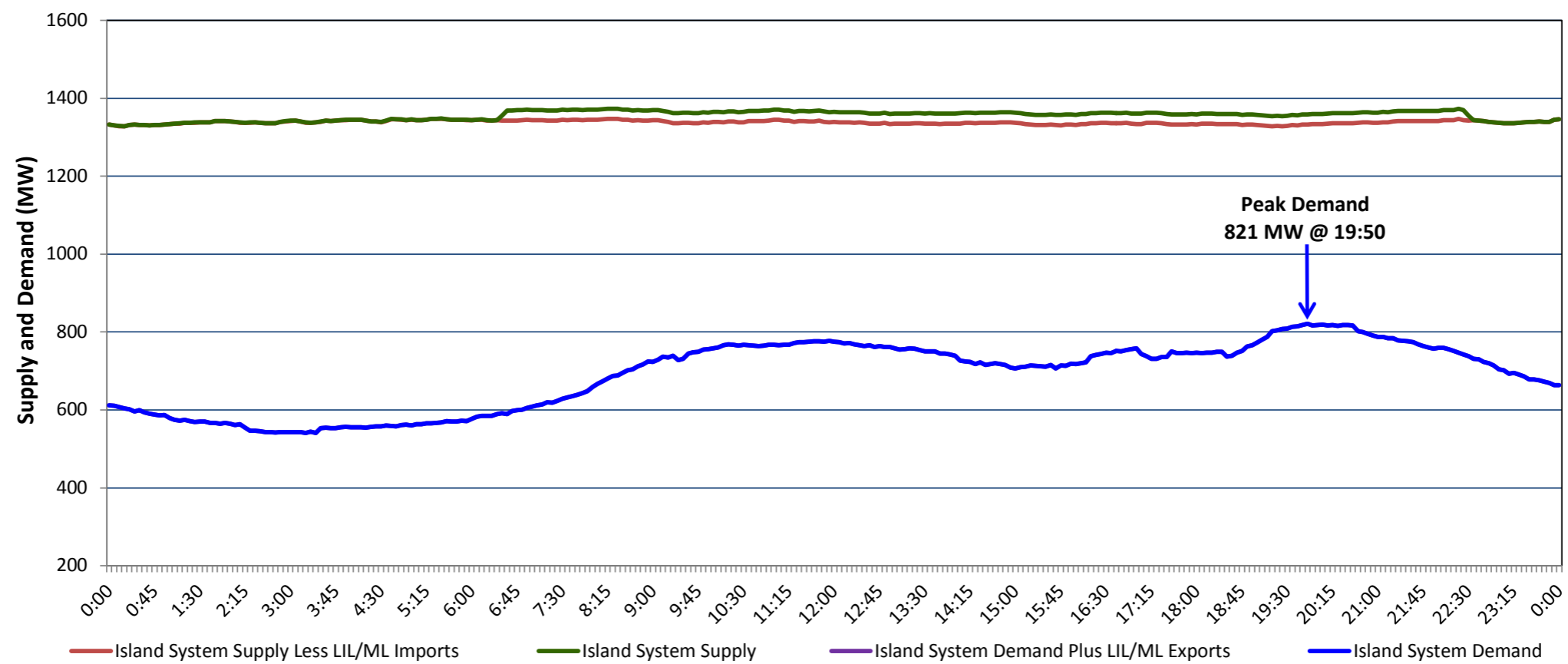


**Newfoundland Labrador Hydro (NLH)
Supply and Demand Status Report Filed Monday, October 01, 2018**

**Section 1
Island Interconnected System Supply, Demand & Exports
Actual 24 Hour System Performance For Sunday, September 30, 2018**



Supply Notes For September 30, 2018

- A As of 1000 hours, July 27, 2018, Holyrood Unit 1 unavailable due to planned outage 88 MW (170 MW).
- B As of 1609 hours, August 07, 2018, Stephenville Gas Turbine available at 25 MW (50 MW).
- C As of 1118 hours, August 21, 2018, Holyrood Gas Turbine unavailable due to planned outage (123.5 MW).
- D As of 1034 hours, September 17, 2018, Bay d'Espoir Unit 4 unavailable due to planned outage (76.5 MW).
- E As of 2004 hours, September 22, 2018, Bay d'Espoir Unit 3 unavailable due to planned outage (76.5 MW).
- F As of 2048 hours, September 26, 2018, Holyrood Unit 2 available at 140 MW (170 MW).
- G As of 1623 hours, September 28, 2018, Holyrood Unit 3 unavailable due to planned outage 110 MW (150 MW).

**Section 2
Island Interconnected Supply and Demand**

Mon, Oct 01, 2018	Island System Outlook ³	Seven-Day Forecast	Temperature (°C)		Island System Daily Peak Demand (MW)	
			Morning	Evening	Forecast	Adjusted ⁷
Available Island System Supply: ⁵	1,305 MW	Monday, October 01, 2018	8	9	915	915
NLH Island Generation: ⁴	1,040 MW	Tuesday, October 02, 2018	7	5	945	945
NLH Island Power Purchases: ⁶	100 MW	Wednesday, October 03, 2018	6	5	1,010	1,010
Other Island Generation:	165 MW	Thursday, October 04, 2018	8	10	935	935
ML/LIL Imports:	- MW	Friday, October 05, 2018	13	8	890	890
Current St. John's Temperature & Windchill: 7 °C	N/A °C	Saturday, October 06, 2018	7	7	975	975
7-Day Island Peak Demand Forecast:	1,010 MW	Sunday, October 07, 2018	7	11	995	995

Supply Notes For October 01, 2018

- Notes:
1. Generation outages for running and corrective maintenance are included. These are not unusual for power system operations. They generally do not impact customer supply. The power system operators schedule outages to system equipment whenever possible to coincide with periods when customer demands are low and sufficient supply reserves are available. However, from time to time equipment outages are necessary and reserves may be impacted.
 2. Due to the Island System having no synchronous connections to the larger North American grid, when there is a sudden loss of large generating units some customer's load must be interrupted for short periods to bring generation output equal to customer demand. This automatic action of power system protection, referred to as under frequency load shedding, is necessary to ensure the integrity and reliability of system equipment. Under frequency events typically occur 5 to 8 times per year on the Island Interconnected System and the resultant customer load interruptions are generally less than 30 minutes.
 3. As of 0800 Hours.
 4. Gross output including station service at Holyrood (24.5 MW) and improved NLH hydraulic output due to water levels (35 MW).
 5. Gross output from all Island sources (including Note 4).
 6. NLH Island Power Purchases include: CBPP Co-Gen, Nalcor Exploits, Rattle Brook, Star Lake, Wind Generation and capacity assistance (when applicable).
 7. Adjusted for curtailable load, market activities and the impact of voltage reduction when applicable.

**Section 3
Island Peak Demand Information
Previous Day Actual Peak and Current Day Forecast Peak**

Sun, Sep 30, 2018	Actual Island Peak Demand ⁸	19:50	821 MW
Mon, Oct 01, 2018	Forecast Island Peak Demand		915 MW

Notes: 8. Island Demand / LIL / ML Exports (where applicable) is supplied by NLH generation and purchases, plus generation owned and operated by Newfoundland Power and Corner Brook Pulp & Paper (Deer Lake Power, DLP).